

---

## **content**





---

--	--

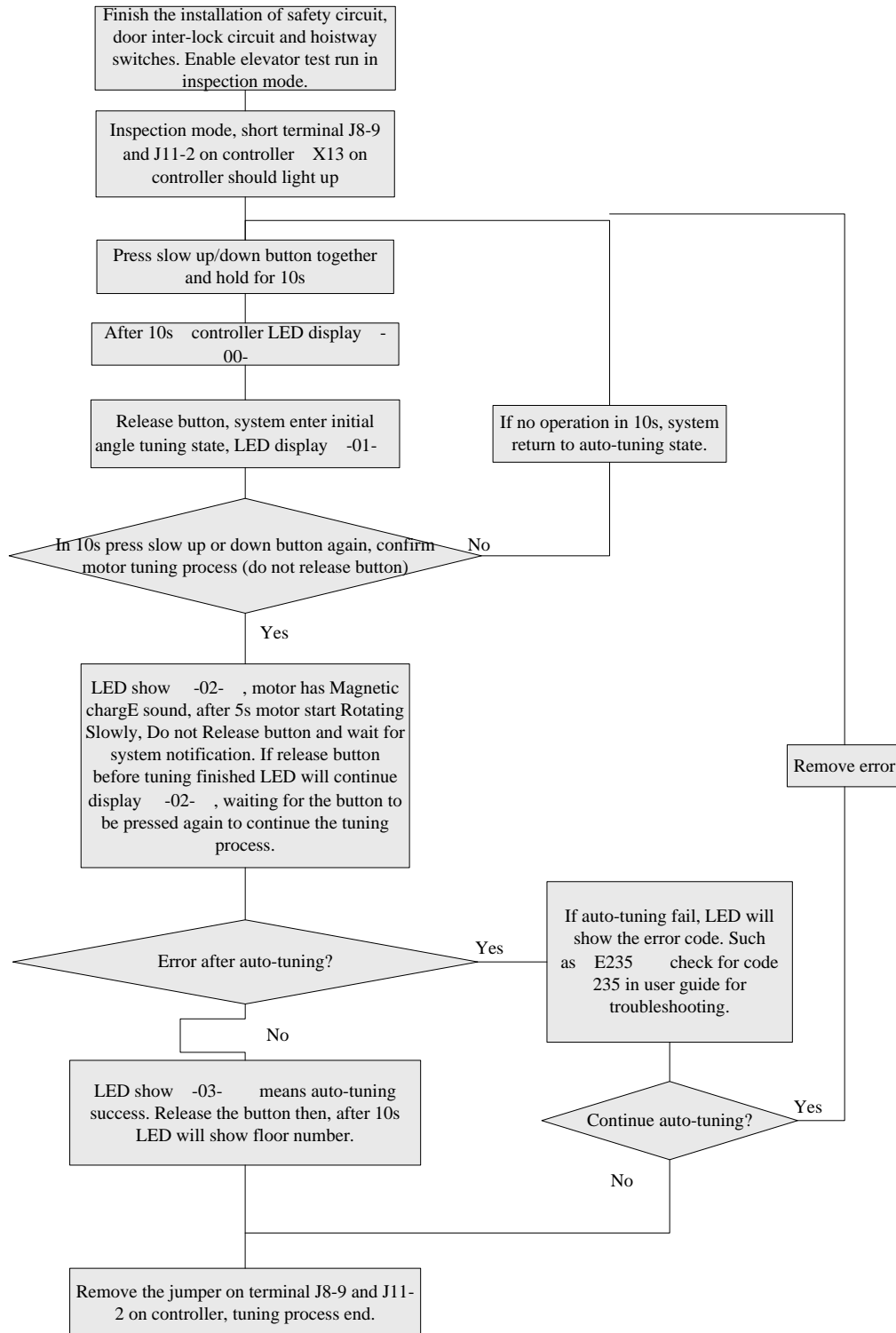
---

---

2.

3.

---





F5-07	R_phase	Motor phase resistance set. (Auto-tuning/ manual input)	Auto-tuning /Nameplate			N	6-14
F5-08	Rated FLA	Motor rated current. (Nameplate)	0 99.999		A	N	6-14
F5-09		For asynchronous machine, NO-Load C >>/48.526948131704100 cur48	0.1~50	0	A	N	6-14

BT /TT2 1 Tf 10.56 0 0 10.56ntDC 35MCID 19 >>711.84 0.72 C

---

F2-01

Brake close first then disable  
elevator run. This is to  
improve elevator stop  
comfort and avoid slip at  
elevator stop.

0.00~9.99

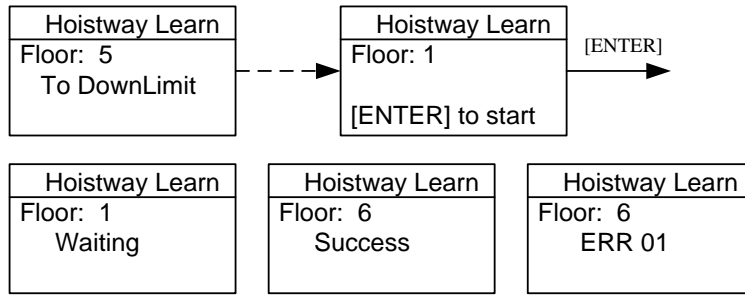
0.50

s

Y

6-4





5.

6.

1.

2.

3.

4.

---

Finish the installation of safety circuit, door interlock circuit and hoistway/door zone switches/flags. Enable elevator test run in normal speed.

Inspection mode, run elevator to bottom terminal position, short J10-6 and J11-2 on controller, X30 input indicator should light up.

Press slow up/ down button together and hold for 10s.

After 10s controller LED will display -UU-

---

Hoistway Parameter Self-Learning Fault List

|--|--|--|







---


## 8.1

Make sure the leveling switches and leveling inductor plates are installed in the right position.

8.1.1.2 Leveling inductor plates length on every floor must be same.

8.1.1.3 Leveling inductor plates must be installed vertically.

8.1.1.4 The position of leveling inductor plates should be precise. When elevator is at the leveling position, the center of the plate and center of two inductors should match together (refer to appendix), otherwise elevator leveling will have deflection, which means in up or down running, elevator stops higher or lower than leveling position.

8.1.1.5 If magnetic inductors are adopted, please make sure the inductor plates inserting to the inductor sufficiently, otherwise it will influence the reaction time of inductor, in that way elevator will overruns the leveling position.

8.1.1.6 To ensure precise leveling, system require elevator to crawl for a certain distance before stop.

8.1.1.7 In practice, first make adjustment for a middle floor, until leveling is precise. Then, adjust the other floors on the base of these parameters.

After adjusting curve selection, ratio and integral gain in the above context, please make sure every time elevator runs up or down, when stop at middle floor, its leveling positions are the same (or very fine). PP

## 8.2

If elevator still cannot achieve desired leveling condition with adjustment based on instructions in





---

---



---

---







---









---







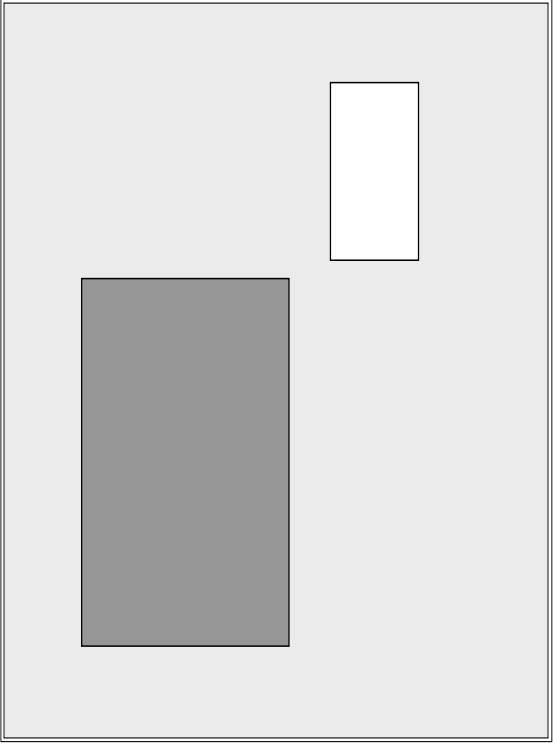
---


---

2. Align PG card and sustain pillar and right socket as the graphic.



---



Port No.	Terminal Symbol	Location	Definition	Usage	Interface Tech Spec			
					Interface Type	Rated Capacity	On/off Time	Max Speed
	Y0	J1_1	Brake control output					

J1

Output

Relay

	X35+	J4_7	Door inter-lock input + 110V—220VAC	Input				
	X35-	J4_8	Door inter-lock input 110V—220VAC					
J5	I0	J5_1	Door Open delay input	Input	OC			
	I1	J5_2	All collective selective /Single collective selective Car call 1/ Car call 1					
	I2	J5_3	All collective selective /Single collective selective Car call 2/ Car call 2					
	I3	J5_4	All collective selective /Single collective selective Car call 3/ Car call 3					
	I4	J5_5	All collective selective /Single collective selective Car call 4/ Car call 4					
	I5	J5_6	All collective selective /Single collective selective Car call 5/ Car call 5					
	I6	J5_7	All collective selective /Single collective selective Car call 6/ Car call 6					
	I7	J5_8	All collective selective /Single collective selective Car call 7/ Car call 7					
	I8	J5_9	All collective selective /Single collective selective Up call 1/ Car call 8					
	I9	J5_10	All collective selective /Single collective selective Up call 2/ Car call 9					
J6	I10	J6_1	All collective selective /Single collective selective Up call 3/ Call Input 1	Input	OC			
	I11	J6_2	All collective selective /Single collective selective Up call 4/ Call Input 2					
	I12	J6_3	All collective selective /Single collective selective Up call 5/ Call Input 3					

	I13	J6_4	All collective selective /Single collective selective Up call 6/ Call Input 4					
	I14	J6_5	All collective selective /Single collective selective Down call 2/ Call Input 5					
J7	I15	J7_1	All collective selective /Single collective selective Down call 3 Call Input 6	Input	OC			
	I16	J7_2	All collective selective /Single collective selective Down call 4/ Call Input 7					
	I17	J7_3	All collective selective /Single collective selective Down call 5/ Call Input 8					
	I18	J7_4	All collective selective /Single collective selective Down call 6/ Call Input 9					
	I19	J7_5	All collective selective /Single collective selective Down call 7/Call Input 10					

Port No.	Terminal Symbol	Location	Definition		Interfac	Spec
----------	-----------------	----------	------------	--	----------	------

